

# Anti-H\_TSLPR hlgG1 Antibody

## Product information

GM-31018AB-10	10 µg
GM-31018AB-100	100 µg
GM-31018AB-1000	1 mg

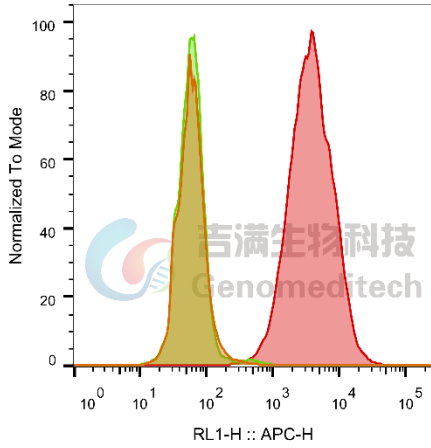
## Antibody Information

Species Reactivity	Human;
Source/Isotype	Monoclonal human IgG1 /κ
Application	Flow Cytometry; Block assay
Specificity	Detects TSLPR
Gene	TSLPR
Other Names	CRL2Y, CRLF2
Gene ID	Q9HC73-1 (human)
Background	TSLPR encodes a member of the type I cytokine receptor family. The encoded protein is a receptor for thymic stromal lymphopoietin (TSLP). Together with the interleukin 7 receptor (IL7R), the encoded protein and TSLP activate STAT3, STAT5, and JAK2 pathways, which control processes such as cell proliferation and development of the hematopoietic system. Rearrangement of this gene with immunoglobulin heavy chain gene (IGH) on chromosome 14, or with P2Y purinoceptor 8 gene (P2RY8) on the same X or Y chromosomes is associated with B-progenitor acute lymphoblastic leukemia (ALL) and Down syndrome ALL. Alternatively spliced transcript variants have been found for this gene.
Storage	Store at 2-8°C short term (1-2 weeks).Store at ≤ -20°C long term. Avoid repeated freeze-thaw.
Formulation	Phosphate-buffered solution, pH 7.2.
Endotoxin	< 1 EU/mg, determined by LAL gel clotting assay

## Data Examples

Flow cytometry

H\_TSLP Reporter Cell Line (Catalog # GM-C15572) was stained with Anti-H\_TSLPR hlgG1 Antibody (Catalog # GM-31018AB) or isotype control antibody, followed by anti-Human IgG APC-conjugated Secondary Antibody.



SampleID	Geometric Mean : RL1-H
Cell anti-H_TSLPR+APC-2nd Ab	61.1
H_TSLP Reprter Cell H_IgG+APC-2nd Ab	60.7
H_TSLP Reprter Cell anti-H_TSLPR+APC-2nd Ab	3672

Fig. FACS

Block assay

Anti-H\_TSLPR hlgG1 Antibody (Catalog # GM-31018AB) inhibits H\_TSLP Reporter Cell Line (Catalog # GM-C15572) Luminescence induced by Recombinant Human TSLP Protein. IC50 for this effect is 0.02348  $\mu\text{g/mL}$ .

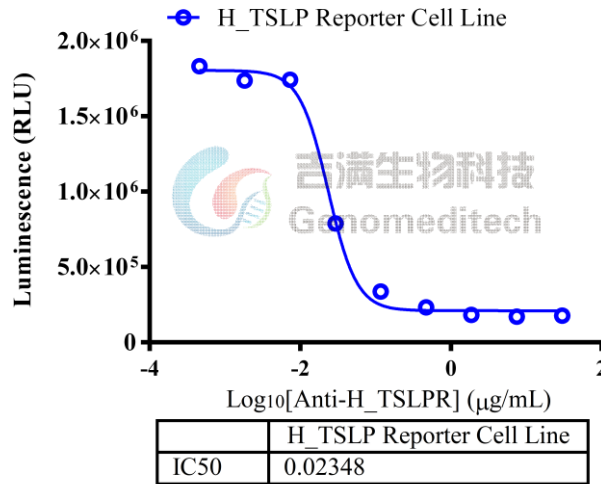


Fig. assay